

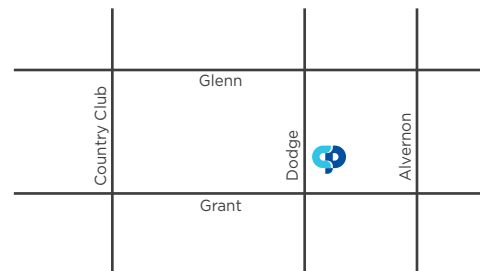
Providing serious help for individuals with a serious mental illness.

Community Partnership Care Coordination (CPCC) offers a full range of services to individuals with serious mental illness, whose needs have not been met by traditional methods.

Our goal is to help create a pathway for individual recovery through community treatment and rehabilitation.



2502 N. Dodge Blvd., Ste. 100, Tucson, AZ 85716
520-901-4701 or 4702
CommunityPartnersInc.org/cpcc



Located on Dodge just north of Grant,
Easily accessible on bus routes 9 and 11.

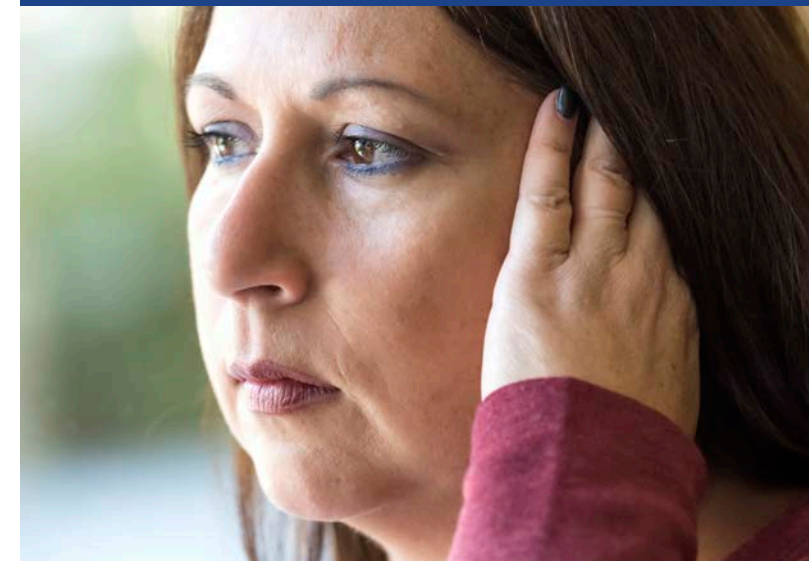
Community Partnership Care Coordination
(CPCC) is a licensed Outpatient Treatment Center whose mission is to provide timely, customized behavioral health services to individuals of any age using innovative healthcare approaches to foster engagement, improve health and inspire hope.

Funding provided by Cenpatico Integrated Care.

Assertive Community Treatment (ACT) Teams



Treating serious mental illness with
an interdisciplinary team approach



A Subsidiary of **Community Partners, Inc.**

**New Name. New Services.
Same Community Mission.**

Formerly Community Partnership of Southern Arizona (CPSA)



*Building on decades of expertise
and the highest quality of care.*



Who is served by Assertive Community Treatment (ACT)?

Title XIX Serious Mental Illness (SMI)

We treat individuals who suffer from:

- Schizophrenia spectrum disorders
- Bipolar disorder
- Major depression
- Co-occurring substance use and behavioral health disorders
- Serious mental illness (per state criteria)

Our ACT teams serve individuals who have a high use of in-patient services, are high risk, and/or are currently engaged with the criminal justice system. These individuals may be unable to perform daily tasks, are homeless, have had repeated evictions, or demonstrate an inability to maintain employment.

What is the ACT model?

Assertive Community Treatment is an intensive service delivery approach

The ACT service delivery model employs an interdisciplinary team method of treatment, focused on a shared caseload to ensure members have sufficient support from the ACT team. This intensive team approach includes:

- *In-Vivo services (“Anytime, Anywhere” Treatment)*
- *Unlimited treatment time, frequency and duration*
- *Availability 24 hours a day, seven days a week*
- *Flexible service delivery with extended hours*
- *Full scope of services to meet each member’s unique needs*



Promoting a healthier and safer community.

Our community treatment approach offers benefits that go beyond helping individuals in need. This unique model can help decrease hospital admissions, first responder calls, and emergency room visits.

At the same time, ACT increases compliance with medication, improves self-sufficiency, and fosters independence.



MAKE A REFERRAL TODAY.

Call an ACT team at (520) 901-4701 or 4702
E-mail: ACT@communitypartnersinc.org

In order to provide members with optimal care, admissions to ACT are limited to 10 members per month.